



FLAT PANEL LCD MONITOR ARMS

TECHNICAL WORKSPACE SOLUTIONS
WWW.HERGO.COM | 888.222.7270



FLAT PANEL LCD MONITOR ARMS

Overview

From elaborate corporate settings to small home offices, Hergo offers flat panel mounting solutions for diverse working environments. Users may adjust monitors as needed to create a comfortable work space – pivot or tilt flat panels up, down, left and right, move up and down posts, extend in and out, or attach directly to the wall.



Choose from the following:

- Secure Angle/Spring Activated Desk or Wall Mount Arms
- Short Reach Wall Mounts – Tilt/Pivot, Fingertip Adjustment
- Wall Mount Key Board Arm and Mouse Trays
- LCD Post Systems
- Single and Dual LCD Desktop Bases
- Tri-Command and Dual Level Tri-Command Post Systems
- LCD Suspension Arms and Tracks
- Vertical and Horizontal Wall Mount Track Assemblies
- LCD Wallstation – Monitor, KB and CPU Holder
- Orbiter Extension Arm Assemblies

All *Post Mount* systems are available in a *Desk Clamp* or *Grommet Mount* design.

Note: For a complete list of part numbers and specifications, please view the Flat Panel Arm section at www.hergo.com, or consult your Hergo Account Executive for assistance in configuring a mounting solution to meet your specific needs.

Spring Activated / Secure Angle Arms



Short Reach Wall Mounts



Wall Mount Keyboard Arm and Mouse Tray



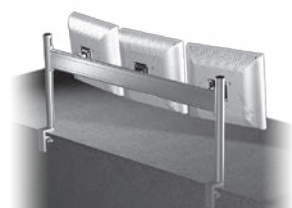
LCD Post Systems Desk and Grommet Mount



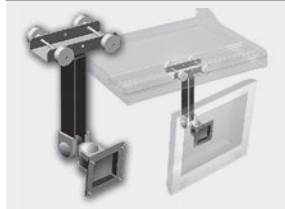
LCD Desktop Bases



Tri-Command Post Systems



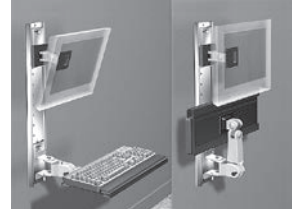
LCD Suspension Arms and Tracks



Horizontal Track Assemblies



LCD Wallstation (Vertical Track Assemblies)



ORBITER - Extension Arm Assemblies



Specifications are subject to change without notice. Consult with a Hergo Account Executive today.

© Hergo Ergonomic Support Systems, Inc.

hergo® TECHNICAL WORKSPACE SOLUTIONS 56-01 55th Avenue, Maspeth, New York 11378 | Tel: 888-222-7270 | Fax: 888-410-0671 | www.hergo.com

FLAT PANEL LCD MONITOR ARMS OPTIONS

Secure Angle Arms

Desk Clamped



Wall Mounted



Short Reach Wall Mounts



LCD Post Systems - Desk & Grommet Mount

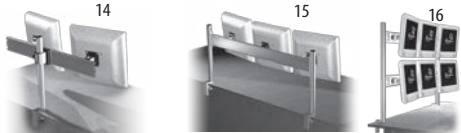


LCD Desktop Bases



Duo and Tri Command Systems

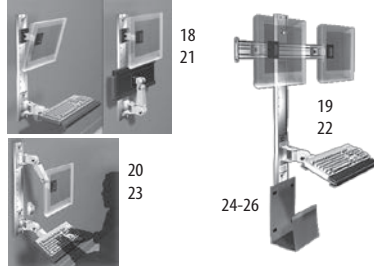
Desk and Grommet Mount Grommet Mounts are not shown



LCD Wall Mount Wallstation #2



Track Assemblies - Vertical



Track Assemblies - Horizontal













#	ITEM	DESCRIPTION	PART No.
01	Desk Clamp Arm	Spring Activated Arm	95-HE503-AL1
02	Desk Clamp Arm	Secure Angle Arm	15-00022-L11
03	Wall Mount Arm	Spring Activated Arm	95-HE503-AL3
04	Wall Mount Arm	Secure Angle Arm	15-00036-L12
05	Grommet Mount	Spring Activated Arm	95-HE503-AL2
06	Wall Mount	Tilt Up-Down or Turn Left-Right	15-00044-L16
07	Wall Mount	Swivel Left-Right and Pivot Up-Down	15-00048-L17
08	Wall Mount	Tilt 30°/Swivel - Hard Wear Plastic	15-00048-L19
09	17"H Post - Desk Mount	1 LCD Monitor Mount	95-00146-101
10	24"H Post - Desk Mount	2 LCD Monitor Mounts	95-00146-102
11	24"H Post - Desk Mount	1 LCD Mount, Keyboard Tray & Mouse Pad	95-00146-106
12	Desktop Base	Single Post - 1 LCD Mount	95-00146-113
13	Desktop Base	Duo LCD Command	95-00146-114
14	Desk Mount	Duo LCD Command (24"W Track)	95-00146-116
15	Desk Mount	Tri LCD Command (39"W Track)	95-00146-120
16	Desk Mount	Dual Level Tri Command (2 - 39"W Tracks)	95-00146-124
17	Wallstation	Includes Monitor, Keyboard & CPU Mounts	15-00024-L16
18	Wall Mount Track	30" L Includes Monitor & Keyboard Mounts	95-00147-101
19	Wall Mount Track	30" L Duo LCD	95-00147-201
20	Wall Mount Track	30" L Sit/Stand Vertical - with Secure Angle Arms	95-00147-301
21	Wall Mount Track	48" L Includes Monitor & Keyboard Mounts	95-00148-101
22	Wall Mount Track	48" L Duo LCD	95-00147-201
23	Wall Mount Track	48" L Sit/Stand Vertical - with Secure Angle Arms	95-00148-301
24	CPU Holder	Wall Mount	99-00140-010
25	CPU Holder	Track Mount	99-00140-012
26	CPU Holder	Wall Track Mount Thin Client	99-00140-014
27	Mounting Track	24" Wide - Mount up to 2 17" LCDs	15-HE501-024
28	Mounting Track	39" Wide - Mount up to 3 17" or 2 22" LCDs	15-HE501-039
29	Mounting Track	24" Wide - Wall Mount - up to 2 17" LCDs	15-HE501-W24
30	Mounting Track	39" Wide - Wall Mount - up to 3 17" or 2 22" LCDs	15-HE501-W39
31	Mounting Track	24" Wide - Hergo Frame Mount	15-HE501-224
32	Mounting Track	30" Wide - Hergo Frame Mount	15-HE501-230
33	Mounting Track	36" Wide - Hergo Frame Mount	15-HE501-236

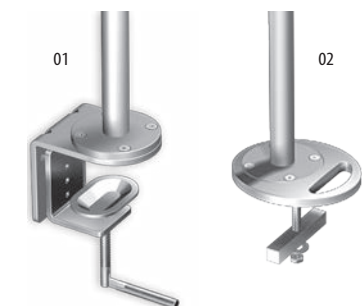
Specifications are subject to change without notice. Consult with a Hergo Account Executive today.

© Hergo Ergonomic Support Systems, Inc.

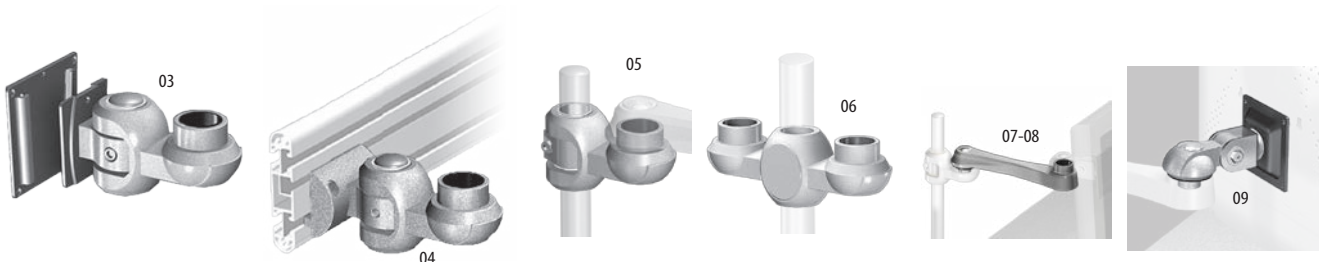
ORBITER - Configuration Assembly Chart

Orbiter Extenders	4" Extender 95-HE502-004	7" Extender 95-HE502-007	10" Extender 95-HE502-010	14" Extender 95-HE502-014	17" Extender 95-HE502-017	20" Extender 95-HE502-020
Mounting Options						
Desk Clamp	 95-HE502-030	95-HE502-035	95-HE502-040	95-HE502-045	95-HE502-050	95-HE502-055
Grommet Mount	 95-HE504-030	95-HE504-035	95-HE504-040	95-HE504-045	95-HE504-050	95-HE504-055
Wall Mount	 95-HE506-030	95-HE506-035	95-HE506-040	95-HE506-045	95-HE506-050	95-HE506-055
Channel Mount	 95-HE508-030	95-HE508-035	95-HE508-040	95-HE508-045	95-HE508-050	95-HE508-055

Orbiter Options



#	ITEM	PART No.
01	Desk Mount	15-HE501-002
02	Grommet Desk Mount	15-HE501-004
03	Wall Mount with Connector	15-HE514-055
04	Channel Mount with Connector	15-HE514-056
05	Post Connector	15-HE514-000
06	Duo Post Connector	15-HE515-000
07	7" Extender Arm	15-HE512-000
08	10" Extender Arm	15-HE513-000
09	LCD Mount with 100mm Mounting Plate	15-HE511-000



Specifications are subject to change without notice. Consult with a Hergo Account Executive today.

© Hergo Ergonomic Support Systems, Inc.

hergo TECHNICAL WORKSPACE SOLUTIONS 56-01 55th Avenue, Maspeth, New York 11378 | Tel: 888-222-7270 | Fax: 888-410-0671 | www.hergo.com



hergo®

Ergonomic Support Systems, Inc.

56-01 55TH AVENUE
MASPETH, NY 11378
T: 888.222.7270
F: 888.410.0671

IntelliPoint
www.hergo.com



Get Hergonized®! Here's why you should:

✓ Hergo Understands Technology

- We grew out of one of the first PC manufacturing companies in the industry, Hertz Computer Corporation.
- Hergo was the first company to introduce technical furniture solutions for the computing environment.

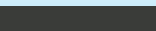

✓ Hergo is an original manufacturer, not a broker

- We are an original equipment designer and manufacturer with a 40,000 sq. ft. facility based in New York City.

✓ Our products are the sturdiest in the industry

- Hergo's frames are **fully welded on all sides** (not just a rectangle made up of "stretchers").
- Frame uprights, legs and brackets are made of heavy-duty 11-gauge steel (See illustration below).

✓ Understanding gauge & strength

- The lower the gauge number, the thicker/stronger the steel.
11 Gauge = .125 inches and looks like this 
16 Gauge = .065 inches and looks like this 
- No other product in the industry matches Hergo's strength.

✓ Laminated surface

- Hergo uses the finest high pressure laminated products from companies such as WilsonArt®, the worldwide leader in decorative surfacing material. We do not use plastic or other flake material.

✓ Powder coating

- Hergo's steel products are powder-coated providing superior quality and durability as well as improved ultraviolet corrosion and erosion resistance. This makes our products environmentally friendly and an excellent choice for use in clean rooms and hospital environments.

✓ Ergonomic and functional

- Hergo's products are considered by many leading Fortune 500 companies to be the most functional, adaptable and ergonomic in the industry. Our unique 1-inch safe-slotting engagement does not require any tools when mounting or rearranging the shelf configuration. All shelf desk-tops and peripherals are height adjustable in 1-inch increments.

In brief...	Hergo	Others
Original Designer & Manufacturer (OEM)	YES	?
Desk height Adjustable In 1 Inch Increments	YES	?
Shelf height Adjustable In 1 Inch Increments	YES	?
Strongest Upright, Legs & Brackets / 11-Gauge	YES	?
Heavy-Duty Steel Shelves	YES	?
Hi-Pressure Laminated Surfaces by Formica® & WilsonArt®	YES	?
Wire Management / Versatile Attachments	YES	?
Quick Shipping & Easy Assembly	YES	?
Designed by Experienced Engineers	YES	?
Free Pre-Sale Consultation and CAD Drawing	YES	?
Best Value / Competitive Pricing	YES	?
Lifetime Warranty on Hergo Steel Products	YES	?



Hergo Ergonomic Support Systems, Inc.,
designs, manufactures and markets an
extensive line of functionally engineered
modular technical office furniture.



Hergo's products include:

- **Open Computer Racking Systems**
- **Computer Enclosures and Cabinets**
- **Relay Racks for Computers and Communications Equipment**
- **Personal Workstations & Computer Desks**
- **Training/Studio Desks**
- **Flat Panel Monitor (LCD) Arms**
- **Mobile Hospital Carts**
- **PACS Workstations**

We provide customers with free space design consultation, including CAD drawings and simulated environment renderings, to help maximize user space and productivity.

Save time and money. Visit our dynamic and resourceful website: www.hergo.com.

**We are located at: 56-01 55th Avenue
Maspeth, New York 11378.**

Further assistance is just a phone call away.



TECHNICAL WORKSPACE SOLUTIONS
Approved supplier to all branches of the U.S. Government



1-888-222-7270
www.hergo.com